



Your Guide to an Accessible Stay



EATON MANOR

info@eatonmanor.co.uk



At Eaton Manor we often accommodate up to four generations in one holiday cottage, and therefore we realise the importance of making our cottages as accessible as possible to all guests.

If anyone in your group has particular access requirements, we welcome the opportunity to show you around before booking.





PENDENNIS



PENDENNIS



PENDENNIS



TOAD HALL



TOAD HALL



TOAD HALL

REASONS TO BOOK AN ACCESSIBLE STAY AT EATON MANOR:

Cottages Recommended for Accessibility

PENDENNIS

- NAS M2 – Suitable for part time wheelchair users
- Sleeps 10 in 6 bedrooms
- 6 bathrooms (2 are accessible wet rooms)
- Single-storey with permanent ramp access



TOAD HALL

- NAS M1 – Suitable for reduced mobility
- Sleeps 14 in 6 ensuite bedrooms
- 2 ground floor bedrooms
- Portable ramp access

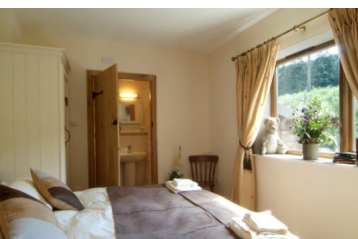




CURLEW COTTAGE



CURLEW COTTAGE



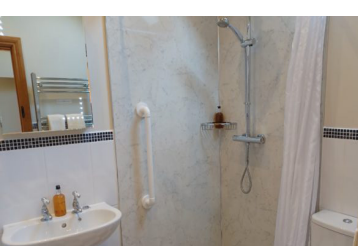
CURLEW COTTAGE



GARDEN COTTAGE



GARDEN COTTAGE



GARDEN COTTAGE

CURLEW COTTAGE

- NAS M1 – Suitable for reduced mobility
- Sleeps 8 in 4 ensuite bedrooms
- Single-storey
- Portable ramp access



GARDEN COTTAGE

- NAS M1 – Suitable for reduced mobility
- Sleeps 3 in 2 ensuite bedrooms
- Single-storey
- Portable ramp access





PENDENNIS

When we respond to an enquiry or take a booking, we enquire about the requirements of each group. On occasions we suggest alternative cottages which may better suit the group's needs e.g. downstairs bedrooms, walk-in showers etc.

REDUCED MOBILITY

- Cars can pull right up to the entrance of each M1 & M2 cottage.
- Each cottage has its own private parking.
- There are ground floor bedrooms in each cottage, and we have some bathrooms with grab rails.
- Most of the gardens are flat and easy to access.
- For specific access equipment, we have links with local providers.
- Accessibility guides are available for each cottage.
- Key cottage measurements are available.
- The building that houses the Banqueting Room and Heywood Room has fully accessible facilities, including an access ramp and accessible toilets.
- The games barn is accessible.
- For further information on any of the above, please contact us.



PENDENNIS



PENDENNIS



PENDENNIS



PENDENNIS



PENDENNIS



PENDENNIS



PENDENNIS

REDUCED MOBILITY ITEMS

We understand how difficult it is to bring everything guests might need for those with reduced mobility, and so we try and provide as much as we can to make life a bit easier when staying at Eaton Manor.

We have a variety of items available for complimentary use by guests with reduced mobility. Please request these items in advance to ensure we have availability of them for you.

- Wooden chair with arms
- Toilet seat riser with frame
- Shower stool and shower chair
- Commode/shower wheelchair
- Portable alarm
- Elephant Feet to increase single bed height
- Wheelchair
- Waterproof mattress cover
- Portable outdoor ramp, suitable for Toad Hall, Curlew Cottage & Garden Cottage

If you require any specialist mobility equipment during your stay which is not listed above, we have links with some local suppliers. Please contact us for their details.

SENSORY IMPAIRMENTS

- Our website has a responsive design so text can easily be enlarged.
- Assistance dogs are welcome at no extra cost.



CURLEW COTTAGE



GARDEN COTTAGE



TOAD HALL



CURLEW COTTAGE

LOCAL CAFES, PUBS AND RESTAURANT SUGGESTIONS

Here is a list of cafés, pubs and restaurants in the local area, and we have included a key to show if we believe they are Accessible; Family Friendly; Dog Friendly.

Although this information is correct at the time of publishing, it is worth a quick phone call to the establishment before you make a trip to double check it will suit your requirements.

We welcome feedback, so should you find a change to these details, or a new place that you feel we should add to this list, please email us on info@eatonmanor.co.uk

Accessible



Family Friendly



Dog Friendly



Tea Rooms / Cafés			
Carding Mill Valley National Trust Tea Room (15 minute drive) Carding Mill Valley, Church Stretton, SY6 6JG 01694 725000			

Tea Rooms / Cafés CONTINUED...



CURLEW COTTAGE



GARDEN COTTAGE



TOAD HALL



PENDENNIS

Accessible



Family Friendly



Dog Friendly



Tea Rooms / Cafés CONTINUED...

Ludlow Kitchen Café (20 minute drive) Bromfield, Ludlow, SY8 2JR 01584 856000			
Churncote Kitchen (30 minute drive) Churncote Farm, Bicton Heath, Shrewsbury, SY3 5EB 01743 851913			
Battlefield Sparrow's Café (35 minute drive) Battlefield 1403, Upper Battlefield, Shrewsbury, SY4 3DB 01939 210905			

Farm Shops / Deli's / Butcheries			
Ludlow Farm Shop (20 minute drive) Bromfield, Ludlow, SY8 2JR 01584 856000			
Churncote Farm Shop (30 minute drive) Churncote Farm, Bicton Heath, Shrewsbury, SY3 5EB 01743 851081			

Farm Shops / Deli's / Butcheries CONTINUED...



GARDEN COTTAGE



TOAD HALL



CURLEW COTTAGE



PENDENNIS

Accessible



Family Friendly



Dog Friendly



Farm Shops / Deli's / Butcheries CONTINUED...

<p>Battlefield Farm Shop (35 minute drive) Battlefield 1403, Upper Battlefield, Shrewsbury, SY4 3DB 01939 210905</p>			
--	--	--	--

Pubs / Bars / Restaurants			
<p>The Station Inn (10 minute drive) Marshbrook, Church Stretton, SY6 6QE 01694 781208</p>			
<p>The Kings Arms (10 minute drive) 53 High Street, Church Stretton, SY6 6BY 01694 658085</p>			
<p>The Pound Inn (15 minute drive) Leebotwood, Church Stretton, SY6 6ND 01694 751477</p>			

Pubs/Bars/ Restaurants CONTINUED...



TOAD HALL



CURLEW COTTAGE



PENNENNIS



GARDEN COTTAGE

Accessible



Family Friendly



Dog Friendly



Pubs / Bars / Restaurants CONTINUED...

<p>The Clive Arms (20 minute drive) Bromfield, Ludlow, SY8 2JR (dogs allowed in bar area only) 01584 856565</p>			
<p>The Castle Hotel (25 minute drive) Market Square, Bishops Castle, SY9 5BN 01588 638 403</p>			
<p>The Charlton Arms (25 minute drive) Ludford Bridge, Ludlow, SY8 1PJ 01584 872813</p>			



PENDENNIS



GARDEN COTTAGE



TOAD HALL



CURLEW COTTAGE



GARDEN COTTAGE



EATON MANOR

Eaton Manor Country Estate
Eaton-under-Heywood
Church Stretton
Shropshire SY6 7DH

info@eatonmanor.co.uk
01694 724814

www.eatonmanor.co.uk/accessibility